

Central Murray Regional Waste Management Group



Business Plan
2013/14 to 2015/16

Foreword



Message from the Chair

The Central Murray Regional Waste Management Group's direction and actions for the next three years are set out in the Business Plan for 2013/14 to 2015/16. Organics diversion and upgrading infrastructure will be a focus for the next couple of years.

The Business Plan is a 'living document' able not only to be adjusted to the needs and direction of Government and the community within the region but also to improve methods of waste reduction, recycling, sustainable consumption and litter control.

The Group's vision reflected in the Business Plan is to provide waste management services that are not only economical but also ensure the sustainability of both the environment and the communities within the region.

The strong community networks and partnerships we have already established coupled with the past success of our programs will help drive us to achieve our goals.

Our performance will be measurable by the key performance indicators and diversion targets set out in this Business Plan.

Our community education programs will support and promote existing and proposed initiatives, to encourage the community to reduce the amount of recyclables and organics in the waste bin. This will allow our region to reduce the amount of material that goes to landfill.

The uniqueness of our region will present challenges that will be addressed through customised programs that will reduce municipal waste within the region by working collaboratively with our member councils, the community and other like-minded organisations.

A handwritten signature in black ink on a light-colored rectangular background. The signature reads "Neville Goulding" in a cursive script.

Neville Goulding
Chairperson

Table of Contents

Introduction	4
1.1 Who we are	6
1.2 Legislative Functions and Business Planning	
1.2.1 Functions	6
1.2.2. Business Planning	6
1.3. Strategic Context	
1.3.1. Towards Zero Waste Strategy	6
1.3.2. Towarads Zero Waste Targets	6
1.3.3. CMRWMG Targets	7
2. Performance	8
2.1 Waste Reduction and TZW Targets	8
2.2 Recovery Rate and TZW Targets	9
2.3 Litter Reduction and TZW Targets	10
3. Summary of Objectives	11
4. Objectives and Strategies	12
5. Financials	17
6. Appendices	18
6.1 Legislative Requirements	18

1.0 Introduction

The Central Murray Regional Waste Management Group (CMRWMG) is one of Victoria's thirteen Waste Management Groups. The CMRWMG covers the Victorian Municipalities of Buloke Shire Council, Gannawarra Shire Council, Loddon Shire Council, Swan Hill Rural City Council as well as the Shire of Wakool in New South Wales. The region boasts a population of approximately 49,000 people and covers a total land area of 32,095 km². Agricultural activity occurs across approximately 84% of the total Central Murray Region.

The Central Murray Regional Waste Management Group will play a pivotal part in implementing the Victorian Government's policies, in particular the *Growing Victoria Together* goals of reducing the amount of waste generated, ensuring the State's resources are used as effectively as possible, and encouraging increased reuse and recycling of waste materials. The region's business plan will also contribute to the Government's *Our Environment Our Future: Victoria's Environmental Sustainability Framework* and *Getting full value: the Victorian Waste and Resource Recovery Policy*.

This plan is a three year rolling business plan for the period 2013/14 to 2015/16 which provides a specific focus on linking the Towards Zero Waste priorities to the CMRWMG objectives and actions to ensure a planned and integrated approach in both the immediate and longer term.

The regional business plan reinforces the region's strategic role in planning, co-ordinating and facilitating waste minimisation and management activities on behalf of its member councils and their communities.

1.1 Who We Are

The Region's member councils are:

Buloke Shire Council
Gannawarra Shire Council
Loddon Shire Council
Swan Hill Rural City Council
Shire of Wakool

Local government's primary waste management responsibility is for municipal solid waste, but in the Central Murray Region they play a role in relation to some solid industrial waste. An important principle in driving local government waste management services is 'best value' which includes consideration of environmental sustainability.

The population trend has an overall decrease compared to 2006, 2001 and 1996 ABS figures. Anecdotal evidence from Swan Hill Rural City Council and Shire of Wakool indicate that the population in these areas are increasing.

	1996	2001	2006	2011	Square Km
Buloke Shire Council	7,599	6,981	6,981	6,384	8,004
Gannawarra Shire Council	11,922	11,394	11,851	10,366	3,732
Loddon Shire Council	8,586	8,197	8,351	7,459	6,694
Swan Hill Rural City Council	20,392	20,710	21,611	20,449	6,116
Shire of Wakool	4,941	4,802	4,822	3,962	7,549
TOTAL	53,440	52,084	53,616	48,620	32,095

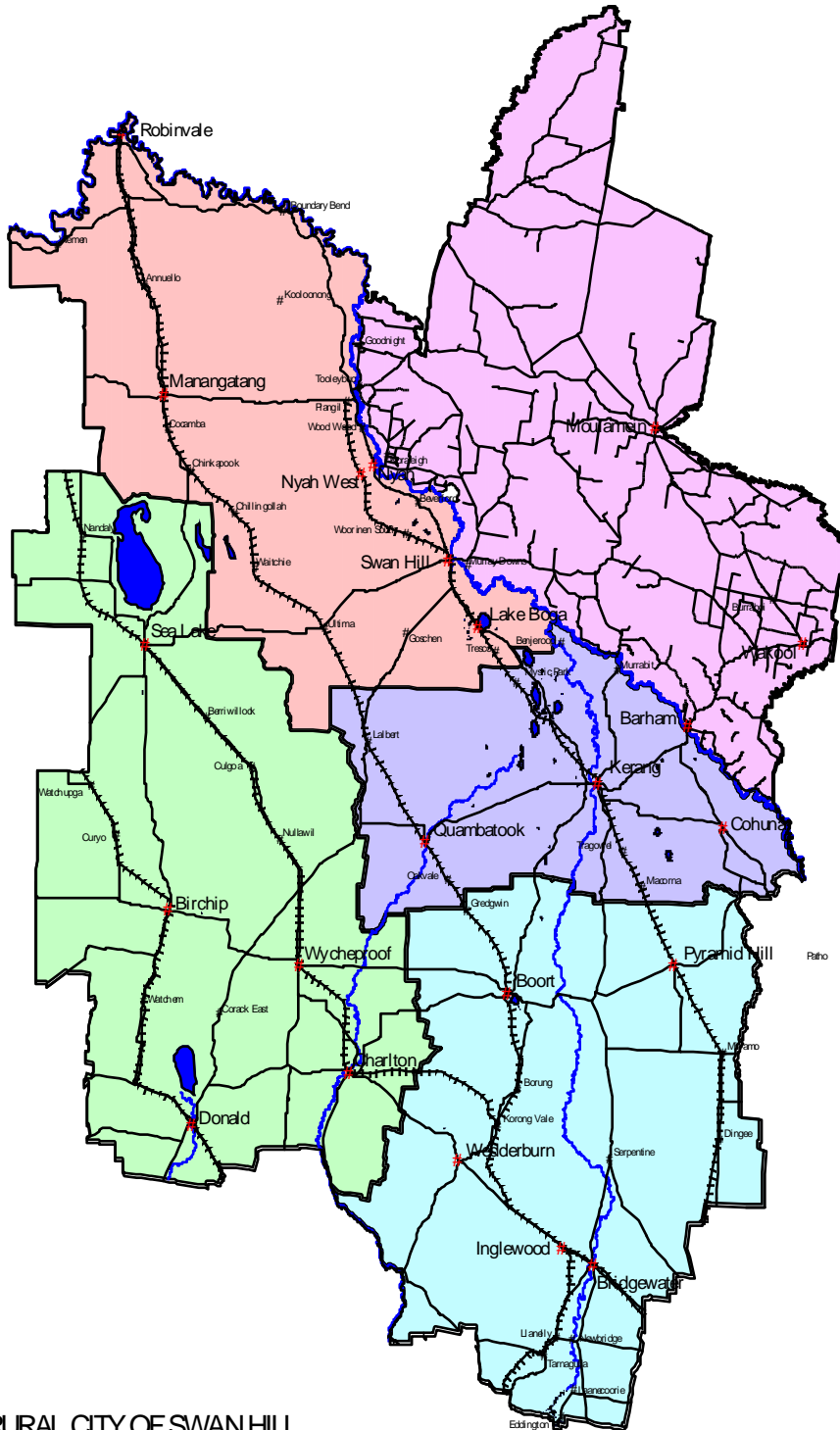
Mission

Our **mission** is to coordinate and educate regional best practice management in waste management through partnerships, resource provision and communication to support a vibrant community.

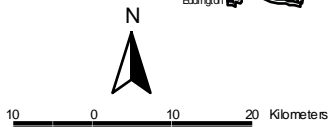
Vision

Our **vision** is to work with our communities and industries to achieve sustainable waste management and waste reduction in an environmentally responsible manner.

Central Murray Regional Waste Management Region



- RURAL CITY OF SWAN HILL
- SHIRE OF BULOKE
- SHIRE OF GANNAWARRA
- SHIRE OF LODDON
- SHIRE OF WAKOOL



1.2 Legislative Functions and Business Planning

1.2.1 Functions

Regional Waste Management Groups (RWMGs) were established under the Environment Protection (Amendment) Act 1996. Their functions are set out in Section 50H of the Environment Protection Act as follows:

- (a) to plan for the management of municipal waste in its region, working in partnership with the councils in the region; and
- (b) to co-ordinate the activities of its members in its region to give effect in its region to State policies, strategies and programs relating to waste; and
- (c) to facilitate and foster best practices in waste management.

Getting full value: the Victorian Waste and Resource Recovery Policy

The Victorian Government has released a new policy to improve management of the environmental and public health impacts of waste and to capture the opportunities that the sector provides the Victorian economy. This replaces the previous *Towards Zero Waste Strategy*

Getting full value: the Victorian Waste and Resource Recovery Policy, will help the state get the best value it can from waste resources. This policy sets a 30-year vision for waste and resource recovery in Victoria and policy priorities for the next 10 years.

Getting full value is guided by four main objectives:

- Economic prosperity
- Integrated and efficient waste and resource recovery system
- Public health and wellbeing
- Environmental protection

Following the release of the policy, the government will consider which existing indicators remain relevant and develop more reliable and valid indicators once data and information management systems are in place to support them. A suite of indicators will be developed alongside the development of the policy's implementation plan, which is currently progressing.

In the interim, previous performance measures created for waste management and resource recovery will provide an appropriate approach to reporting on *Getting full value* during this transition period.

1.3 CMRWMG Targets

Our performance will be measurable by the key performance indicators and diversion targets set out in this Business Plan in Table 1 below. Our diversion targets for 2013/14 include:

- Waste to landfill (garbage) 405 kg/hh/yr (7,987 tonnes)
- Commingled packaging (recycling) 355 kg/hh/yr (7,000 tonnes)
- Green organics 180 kg/hh/yr (1,620 tonnes)
- Kerbside recyclables 46% of total tonnes
- Kerbside recyclables and organics 61% of total tonnes
- 100% reduction in plastic shopping bag use by households
- Reduction in litter throughout the region through EPA Litter Report Line projects

These will be achieved by improved municipal waste and recycling services and education program which will include:

- a targeted campaign to reduce recyclables in the waste bin
- the implementation and promotion of material diversion programs at regional facilities
- implementing a three bin system that will capture green organics
- improved infrastructure with the upgrade of landfills and transfer stations
- increase public place recycling

Table 1 Central Murray Regional Targets

Household materials generated per household serviced	2011-12 Central Murray Region 3-Year Business Plan Actual	2012-13 Central Murray Region 3-Year Business Plan Target	2013-14 Central Murray Region 3-Year Business Plan Target	2014-15 Central Murray Region 3- Year Business Plan Target	2015-16 Central Murray Region 3-Year Business Plan Target
Waste to landfill (garbage) kg/household/year	Reg. Avg 589	Reg. Avg 560	Reg Avg 568	Reg Avg 566	Reg. Avg 565
Commingled packaging and paper/cardboard recycling kg/household/year	Reg. Avg 262	Reg. Avg 260	Reg Avg 263	Reg Avg 265	Reg. Avg 266
Garden organics recycling kg/household/year	Reg. Avg 316	Reg. Avg 180	Reg Avg 230	Reg Avg 250	Reg. Avg 255
Total Waste Generation (Garbage, recycling & organics)	Reg. Avg 1,167	Reg. Avg 1,000	Reg Avg 1061	Reg Avg 1081	Reg. Avg 1086
Kerbside recyclables % of total tonnes	Reg. Diversion Rate: 32%	Reg. Diversion Rate: 26%	Reg. Diversion Rate: 32%	Reg. Diversion Rate: 32%	Reg. Diversion Rate: 32%
Kerbside recyclables and organics % of total tonnes	Reg. Diversion Rate: 37%	Reg. Diversion Rate: 44%	Reg. Diversion Rate 46%	Reg. Diversion Rate 48%	Reg. Diversion Rate: 48%
Litter Reduction	80% reduction in plastic bags 55% reduction in roadside litter	90% reduction in plastic bags 58% reduction in roadside litter	95% reduction in plastic bags 59% reduction in roadside litter	100% reduction in plastic bags 60% reduction in roadside litter	100% reduction in plastic bags 60% reduction in roadside litter

2.0 Performance

2.1 Waste Reduction

Table 1 and Figure 2 provide a summary of the region's performance in relation to waste reduction.

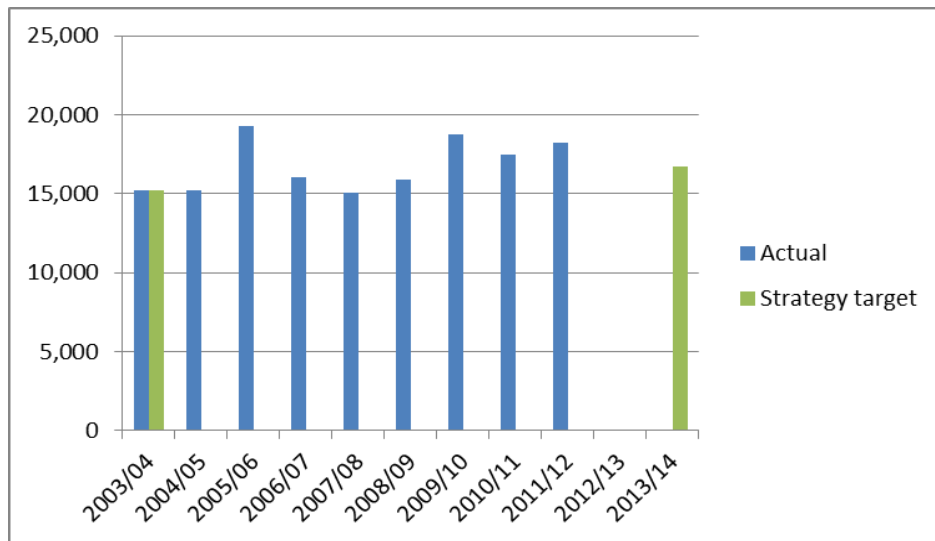
Table 1: Reduction in the Rate of Municipal Solid Waste Generation (target in tonnes)

	Base year (tonnes)	Latest Available Data (tonnes)	3 Year Forecast (tonnes)		
	2003-2004	2011-2012	2013-2014	2014-2015	2015-2016
Central Murray RWMG	15,199	17,151	16,918	17,937	18,328
Central Murray RWMG Including Wakool Shire	16,079	18,218	17,958	18,977	19,368

(*) Total Waste Generation = Garbage + Recycles Collected + Garden Organics Collected

Please note: These figures include amounts of green organics and recyclables collected at drop-off points from municipal sources.

Figure 1: Performance against Target 1 (total tonnes)



2.2 Recovery Rate

Table 2 and Figure 3 provide a summary of the region's performance in relation to municipal solid waste resource recovery rate.

Table 2: Kerbside Total Waste (including drop-offs)

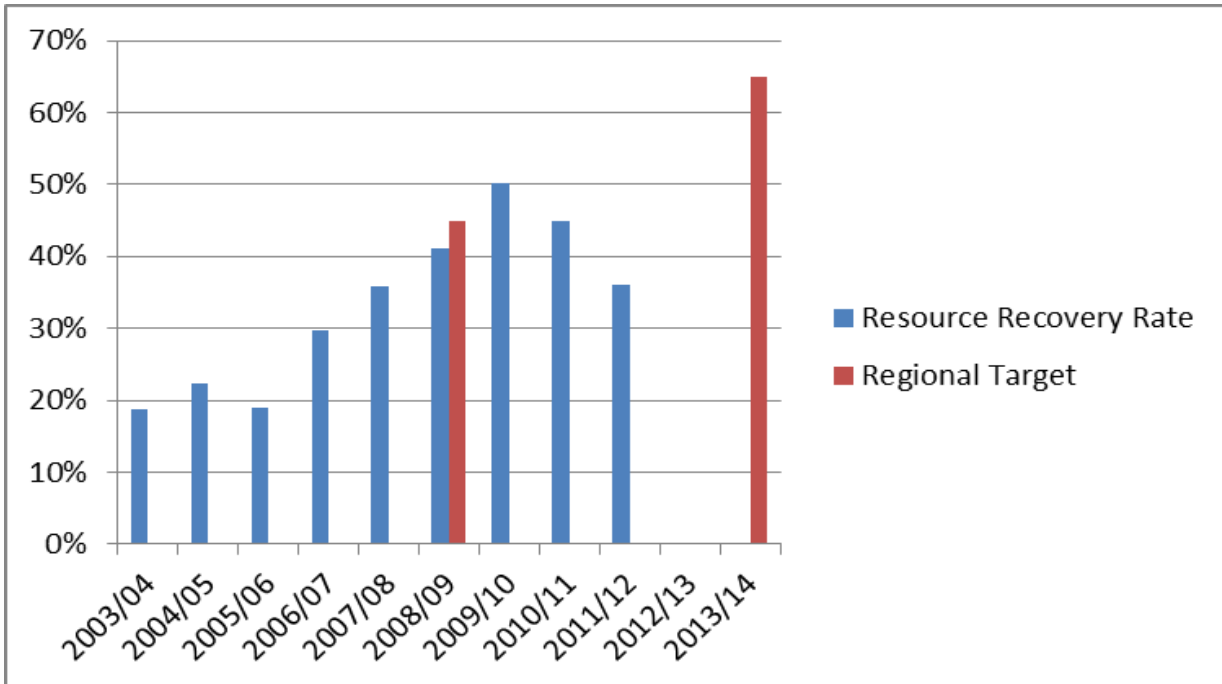
Waste Type	Central Murray Region	Including Wakool Shire
	Total tonnes 2011-2012	
A=Garbage	10,380	11,088
B=Recyclables collected	4,709	5,068
C=Recyclables recycled	4,709	5,068
D=Garden organics collected	2,062	2,062
E=Garden organics processed	1,479	1,479
Total kerbside collected (A+B+D)	17,151	18,218

Table 3: Kerbside Recovery Rate Targets

	Latest Available Data	3yr rolling plan forecasts			2014Target
	2011-2012	2013-14	2014-15	2015-16	Region
Diversion Rate¹	36%	40%	43%	44%	40%

¹ Diversion rate = $\frac{(C + E)}{(A+B+D)}$

Figure 2: Performance against recovery rate



2.3 Litter Reduction

Table 4. Litter programs/projects

This section provides a description of the region's actions and results to date for *improvement in littering behaviours*.

Litter program/projects
Murray Valley Highway project
Sunraysia Highway and Beyond project which incorporates EPA statewide 'A Cleaner Victoria is in your Hands' campaign
Secure Your Load or Secure a Fine project
Duck Season Opening – extra bins placed in strategic locations

3. Summary of Objectives

1. Provide high quality planning within the region.
2. Improved systems for data collection and recording.
3. Reduce waste to landfill through municipal collections.
4. Increase resource recovery through municipal collections.
5. Increased awareness of recycling and waste diversion
6. Increase resource reduction and recovery from schools, organisations and member councils.
7. Increase organics diversion.
8. Influence litter behaviour
9. Encourage Market Development

4. Objectives and Strategies

1. High quality planning within the region.
2. Improved systems for data collection and recording.

Objective 1: High quality planning within the region.		
Success	Performance Indicator	Basis for Comparison
<i>Updated Regional Waste Management Plan</i>	New plan updated and approved	2005-2010 approved (previous plan)
<i>Facilities comply with best practice environmental management requirements</i>	% and number of landfills and transfer stations complying with best practice environmental management requirements.	Targets: at least 96% (27 out of 28) of facilities comply by June 2014 100% of facilities (28) comply by June 2016
<i>Fully compliant with Corporate Governance Requirements</i>	Board & Audit Committee Meetings held Charter of Corporate Governance & policies updated Risk Assessment updated Financial Compliance Framework Annual Report & Business Plan CMRWGM Sustainability Action Plan Staff training & professional development plan	Updated and implemented % reduction from 2008/09
Strategies	Who	When / Level of Activity
1.1 Apply for funding to assist with updating the 2005-2010 Regional Waste Management Plan (RWMP).	CMRWGM	2013/14
1.2 Undertake comprehensive study into improving disposal efficiencies and investigate alternative business cases for disposal in the Central Murray Region (as part of RWMP).	EO & Member Councils (MC)	2013/14 subject to funding (stf) Community, industry/specialist consultation
1.3 Implementation of Regional Waste Management Plan	EO & MC staff	Annually by June
1.4 Member Council Municipal Strategies updated	MC staff	2013/14, 2014/15 & 2015/16 Each Member Councils Actions/ Recommendations reported quarterly
1.5 Report recycling and waste data to the CMRWGM Board	EO	Quarterly – February, June, August & November
1.6 Implement facility improvement works as per RWMP and results of Facilities Infrastructure Assessment (Landfill and Transfer Station Assessment)	CMRWGM & Member Councils (MC)	2013/14/15 - Swan Hill Recovery Centre built 2013/14 – Upgrade recycling at Charlton, Donald, Birchip and Wycheproof sites 2012/13 Berrillilock – rehabilitation works
1.7 Undertake Organics	CMRWGM & MC	2013/14

Investigation to find viable solutions to deal with organics in the Central Murray Region		
1.8 Rationalisation of landfills and establishment of Transfer Stations (as outlined in the plan)	EO & MC	Landfills converted to Transfer Stations: 2013/14 Charlton (stf) 2013/14 Wycheproof (stf) Inglewood Date to be decided (stf) 2016/17 Moulamein (stf) 2016/17 Wakool (stf) 2013/14 Nandaly to close 2013/14 Boundary Bend to close
1.9 Preparation of Annual Report	EO	Approved by Board in June
1.10 Development of 3 year Business Plan	EO	Approved by Board in August
1.11 Complete Financial Management Compliance Framework Certification	EO	Annually by September
1.12 Undertake Member Council satisfaction survey	EO	Annually by November
1.13 Update and implement CMRWMG Sustainability Action Plan (including carbon offsets)	EO & REO	Report against SAP in June each year

Objective 2: Improved systems for data collection and recording.		
Success	Performance Indicator	Basis for Comparison
<i>Introduce a consistent data recording/reporting system at RRC and Landfill facilities (subject to funding)</i>	Member councils utilising standard data recording system Training for staff	5 member Councils using consistent data recording method
Strategies	Who	When / Level of Activity
2.1 Introduce a consistent data recording / collection system at RRC and Landfill facilities	EO & MC	2013/14 (stf)
2.2 Provide hand held devices for consistent data recording/collection	EO & MC	2013/14
2.3 Provide training to Council staff on data recording systems	EO	2013/14

4. Objectives and Strategies

Objective 3: Reduce waste to landfill through municipal collections.

Objective 4: Increase resource recovery through municipal collections.

Objective 5: Increased awareness of recycling and waste diversion

Objective 6: Increase resource reduction and recovery from schools, organisations and member councils.

Objective 7: Increase organics diversion.

Objective 8: Influence litter behaviour

Objective 9: Encourage Market Development

Objective 3: Reduce waste to landfill through municipal collections.		
Success	Performance Indicator	Basis for Comparison
<i>Reduced kerbside municipal waste to landfill</i>	% reduction in waste to landfill	Targets: Using 2008/09 baseline 566 kg/hh/yr by June 2014
<i>Increased awareness about sorting loads going to facilities</i>	Understanding of focus groups pre/post program % of loads sorted at facilities	Targets: 8% by June 2014 10% by June 2015
Strategies	Who	When / Level of Activity
3.1 Assist Member Councils develop strategies and services that reduce waste to landfill	EO & REO	Advice and education assistance
3.2 Assist Swan Hill Rural City Council and Buloke Shire on RRC infrastructure upgrade projects	CMRWGMG & MC	2013/14 (stf) 2014/15 (stf) 2015/16 (stf)

Objective 4: Increase resource recovery through municipal collections.		
Success	Performance Indicator	Basis for Comparison
<i>Increased resource recovery through municipal kerbside collections</i>	% and volume of resource recovery through kerbside collections	Targets: Using 2008/09 baseline 46% by June 2014
<i>Increased awareness of household recycling knowledge</i>	Qualitative evaluation using results of focus groups % of contamination in household recycling bin	Targets: Estimated target audience No of materials distributed and ads coverage 2007/08 Audit data – 18% Post project audit data Target 50% reduction in contamination
Strategies	Who	When / Level of Activity
4.1 Assist Member Councils develop strategies and services that increase the diversion of waste from landfill	EO & REO	Advice and education assistance
4.2 Promote Council Reuse Centres and investigate opportunities expansion	CMRWGMG & MC	2013/14
4.3 Co-ordinate BlinkyBulb (CFL) collections	CMRWGMG & MC	Annually
4.5 Expand Household Battery Collection	REO	2013/14 2014/15 2015/16

4.6 Continue to promote and support collection of E-Waste	CMRWGMG & MC	Annually
4.7 Support Detox Your Home	CMRWGMG & MC	2013/14 2014/15 2015/16
4.8 Promote Mattress Recycling	REO	2013/14 2014/15 2015/16

Objective 5: Increased awareness of recycling and waste diversion		
Success	Performance Indicator	Basis for Comparison
<i>Implementation of the Regional Education and Communications Plan</i>	No of activities undertaken	Updated & promoted website/social media Newsletters (Update & WOW x 3, Waste Matters x 2)
Strategies	Who	When / Level of Activity
5.1 Raise the CMRWGMG profile	REO	Annually
5.2 Implement "Get it Sorted" campaign	REO & MC	2013/14
5.3 Implement kerbside education program to decrease contamination in the household recycling bin. (Kerbside Pride and Get it Right on Bin Night)	REO & MC	2013/14 2014/15
5.4 Continue to promote and expand Kerbside Pride Education Program	REO	2013/14 2014/15 2015/16
5.5 Implement Kerbside Pride organics education program	REO	2013/14 2014/15 2015/16
5.6 Support Get it Right on Bin Night	CMRWGMG & MC	2013/14

Objective 6: Increase resource reduction and recovery from schools, organisations and member councils.		
Success	Performance Indicator	Basis for Comparison
<i>Increase resource reduction and recovery from schools, organisations and member councils</i>	% increase in recycling and % reduction in waste	Targets: Using 2008/09 baseline 2012/13 – 10% increase in recycling (including organics) & 5% reduction in waste 2013/4 – 12% increase in recycling including organics) & 8% reduction in waste
Strategies	Who	When / Level of Activity
6.1 To support schools in their waste minimisation activities	REO EO/REO REO REO	5 new schools for 2013/14 Participate/Lead in Loddon Mallee ResourceSmart Consortium 5 new schools for 2014/15 5 new schools for 2015/16
6.2 To support organisations in their waste minimisation activities	REO	1 organisation per year
6.3 To support member councils in their waste minimisation activities	REO	5 Member Councils annually

Objective 7: Increase organics diversion.		
Success	Performance Indicator	Basis for Comparison
<i>Increased organics diversion</i>	% and volume of organics diverted from landfill	Targets: Using 2008/09 baseline 12% by June 2013 15% by June 2014 17% by June 2015
<i>Increased kerbside services offered by member Councils</i>	No. of Councils providing a 3 bin system	2 Councils providing a 3 bin system by 2013/14
Strategies	Who	When / Level of Activity
7.1 Assist Member Councils to implement a three bin system to collect organics	EO & MC	Gannawarra Shire Council (stf) Swan Hill
7.2 Implement organics diversion program (<i>Kerbside Pride Organics</i>)	EO & REO	2013/14 2014/15 2015/16
7.3 Support Farm compost workshops	EO & REO	2013/14
7.4 Support Love Food Hate Waste campaign	CMRWGMG & MC	2013/14

Objective 8: Influence litter behaviour		
Success	Performance Indicator	Basis for Comparison
<i>Influenced litter behaviour</i>	% of reports to the EPA litter reports for the Central Murray region	Targets: Using 2008/09 baseline No of people reached Trends over time 10% increase in number of reports to EPA litter report line Pre and post amount of litter on Murray Valley Highway Pre and post amount of litter on Sunraysia Highway
Strategies	Who	When / Level of Activity
8.1 Seek PPR Funding for Member Councils	EO	2013/14 2014/15
8.2 Implement Sunraysia Highway litter project	EO & REO	2013/14
8.3 Investigate opportunities for a Murray River litter project	EO & REO	2013/14 2014/15 2015/16
8.4 Implement Secure Your Load or Secure a Fine project	REO	2013/14
8.5 Investigate infrastructure and education options to support Member Councils with event waste management	EO & REO	2013/14 Special events and peak holiday seasons and long weekends.
8.6 Support Statewide A Cleaner Victoria is in Your Hands campaign	EO & REO	2013/14 2014/15 2015/16
8.7 Reinvalidate Plastic Bag Free Towns	REO	2013/14 2014/15 2015/16
8.8 Grab Your Green Bag Campaign	REO	2013/14 2014/15 2015/16

Objective 9: Encourage Market Development		
Success	Performance Indicator	Basis for Comparison
<i>Established relationship with potential developers</i>	No of contacts made, No of markets developed	Targets: 5 potential developers contacted
Strategies	Who	When / Level of Activity
8.1 Investigate options for use of recyclables	EO	2013/14 2014/15 2015/16

5. Financials

CMRWGM 3 Year Budget Summary Account Description	Annual Budget 2013/14	2014/15	2015/16
INCOME			
Operating			
Landfill Levy	\$283,135	\$288,798	\$294,574
Bank Interest/ Interest on Investments	\$4,000	\$3,000	\$3,000
Miscellaneous Income	\$1,000	\$1,000	\$1,000
Subtotal Operating Income	\$288,135	\$292,798	\$298,574
Programs and Projects			
SV Program Funding	\$125,000	*\$125,000	*\$125,000
Member Councils - Contribution to Education Programs	\$27,286	\$30,014	\$33,015
Subtotal Programs & Projects	\$152,286	\$155,014	\$158,015
Total Income	\$440,421	\$447,812	\$456,589
EXPENDITURE			
Operating			
Employee Benefits			
Executive Officer Salary	\$123,781	\$127,500	\$131,328
Regional Education Officer Salary	\$69,060	\$78,648	\$82,889
Superannuation	\$17,637	\$19,373	\$20,660
Workcover	\$1,361	\$1,552	\$1,635
	\$211,839	\$227,073	\$236,512
Administration			
Audit External	\$9,450	\$9,930	\$10,430
Audit Internal	\$3,200	\$3,250	\$3,400
Bank Charges	\$950	\$950	\$950
Business Plan and Annual Report	\$500	\$500	\$500
Conferences and Seminars	\$6,000	\$6,000	\$6,100
Directors Sitting Fees	\$6,500	\$6,500	\$6,500
Education Trailer Operating	\$1,700	\$1,720	\$1,720
General Expenses	\$1,000	\$1,000	\$1,050
Insurance	\$5,870	\$5,940	\$6,150
Printing, Stationery, Equipment and Consumables	\$9,020	\$3,520	\$4,030
Office Rent and Electricity	\$11,070	\$11,510	\$12,510
Regional Waste Mgt Plan	\$10,000	\$0	\$0
Subscriptions and Registrations	\$3,500	\$3,550	\$3,650
Telephone and Internet	\$7,400	\$7,500	\$7,600
Travel and Accommodation	\$21,000	\$21,000	\$38,950
	\$97,160	\$82,870	\$103,540
Projects and Programs			
Increased Awareness	\$2,086	\$30,014	\$33,015
Reduce Waste	\$650	\$0	\$0
Increase Resource Recovery (Inc AVRWMG Project)	\$20,100	\$0	\$0
Assist Schools, Organisations & Member Councils	\$4,000	\$0	\$0
Increase Organics Diversion	\$17,950	\$0	\$0
Influence Litter Behaviour	\$2,500	\$0	\$0
Improved Data Collection	\$15,000	\$0	\$0
Organics Solution Investigation	\$40,000		
Infrastructure Improvement	\$42,961	\$107,855	\$83,522
	\$145,247	\$137,869	\$116,537
Total Expense	\$454,246	\$447,812	\$456,589
(Deficit) / Surplus	-\$13,825	0	0
Transfer from / to Reserves in Equity	\$13,825	0	0
Balance	0	0	0

*assume ongoing funding

6. Appendices

6.1 Legislative Requirements

Under the *Environment Protection Act 1970*, Regional Waste Management Groups are required to prepare and submit annually a draft three year business plan to the Minister for Environment, Water and Climate Change for approval. The *Act* sets out the compliance requirements that business plans must satisfy before approval by the Minister. Section 50LA of the *Act* states:

50LA Annual business plan

- (1) Each year a regional waste management group must submit to the Minister for approval, on or before the date required by the Minister, a draft business plan—
 - (a) that sets out—
 - (i) its objectives and priorities for the next 3 financial years; and
 - (ii) financial projections for that period; and
 - (iii) its budget for the next financial year; and
 - (iv) what it intends to do over the next financial year; and
 - (v) any other matters that the Minister requires in writing; and
 - (b) that is consistent with—
 - (i) the current business plan of Sustainability Victoria; and
 - (ii) any current and relevant state-wide strategy published by Sustainability Victoria; and
 - (iii) its regional waste management plan.
- (1A) After amending its draft business plan in any way required by the Minister, the regional waste management group must submit a final business plan to the Minister for approval on or before the date required by the Minister.
- (2) If a regional waste management group fails to comply with subsection (1) or (1A), the Minister may direct the Authority to withhold any payment the Authority is required to make to the group under section 52B until the Minister notifies the Authority that she or he is satisfied that the group has complied with subsection (1) or (1A).
- (3) The Authority must comply with such a direction.
- (4) Before making such a direction, the Minister must consult with Sustainability Victoria.
- (5) A regional waste management group must have regard to its current business plan in carrying out its functions.
- (6) A regional waste management group must ensure that a copy of its current business plan is available for inspection by members of the public at its principal place of business whenever that place is open to the public.